



# PROFESSIONAL DEVELOPMENT & SERVICES

FOR SCHOOLS, FAMILIES & COMMUNITIES

**COMPASS**





## LET'S CONNECT

Dr. Kyle Laughlin  
Director, Compass Partners in Learning  
KLaughlin@bhssc.org • 605.394.1876

### OUR MISSION

To partner with schools, families, and communities to meet individuals where they are and guide them to where they want to be.

### OUR VISION

A future where schools, families, and communities are connected to support all individuals.

SCAN HERE  
TO LEARN MORE



## COMPASS MEMBERSHIP

Your school's partner in navigating the ever-evolving landscape of education. Designed to support your staff's growth and development throughout the year, at an affordable price point.



LEARN MORE  
and become a member today!  
[my.path.link/CompassMembership](https://my.path.link/CompassMembership)



### ON-DEMAND TRAINING

Access a growing library of self-paced, online courses, including evergreen content, book studies, and shorter learning modules.



### EXPANDED PD SERVICES

Enhance your on-site professional development with discounted training rates, complimentary pre- and post-training support.



### TIE CONFERENCE SUPPORT

Enjoy discounts on TIE Conference registration, including 30% off per staff member and 40% off whole-staff registrations.

4

PROFESSIONAL DEVELOPMENT

10

DATA EVALUATION & PLANNING

12

CULTURE & CONNECTION

14

COMMUNITY & FAMILY ENGAGEMENT

16

CLASSROOM & TEAM SUPPORT

19

PROJECTS

I REALLY ENJOY THESE TRAINING SESSIONS. I LEARN SO MUCH THAT I AM WANTING TO IMPLEMENT IN MY CLASSROOM.



SUBSCRIBE TO OUR NEWSLETTER! >>>



# PROFESSIONAL DEVELOPMENT

Refine your team's skills and knowledge with our professional development opportunities. The topics can be combined and customized to create a journey that meets your team's unique needs.

All of Compass's professional development is fully-customizable to ensure every participant receives the most relevant and impactful learning experience.



**SCAN THE QR CODE**  
to learn more about the fully customizable options available to your team!



**PARTNER WITH US  
FOR A TAILORED  
LEARNING  
EXPERIENCE**

## COMPETENCY-BASED LEARNING (CBL)

Competency-Based Learning (CBL) emphasizes mastering skills and knowledge over seat time. By embracing these principles, educators can personalize instruction, provide support, and cultivate a deeper understanding of the curriculum in every student. We provide guidance and tools to assist educators in effectively implementing these approaches.

## PROJECT-BASED LEARNING (PBL)

Project-Based Learning (PBL) involves students in authentic, hands-on experiences that promote creativity, curiosity, and motivation. Embracing PBL allows teachers to create dynamic learning environments that prepare students for success in an ever-evolving world. With Compass, educators can gain the knowledge and tools to design and facilitate inspiring projects for deep learning and real-world connections.

## INSTRUCTIONAL LEADERSHIP GROWTH

With Compass, you will develop the knowledge, skills, and mindset needed to lead and support your school community. We offer direct mentorship within your school environment, supporting everyone from new principals to veteran administrators. Topics of focus include progressive discipline, instructional leadership, and the evaluation process.

## DISC PROFESSIONAL DEVELOPMENT

DISC Professional Development enhances staff communication, collaboration, and efficiency. This training helps improve team dynamics by leveraging diverse behavioral styles, boosting collaboration, and fostering a positive, high-performing work environment.

## EXPLICIT INSTRUCTION

Proven to increase effectiveness and student achievement, explicit instruction is one of our most-requested professional development courses. This training equips educators with specific tools and procedures to develop engaging learning experiences for all students using the guiding principles of explicit instruction. Select from broad overview, focused, or customized training options to accommodate your schedule and needs.

## 5-POINT CHECKLIST FOR HIGH-LEVEL MATH INSTRUCTION

This training is designed to prepare K-12 teachers with the best practices for math instruction to enhance the effectiveness of Tier 1 math instruction. It focuses on optimizing the use of purchased curricula and integrating new resources. Key topics include visible learning, explicit instruction, feedback, formative assessments, and promoting high-level thinking.

## CREATING MATHEMATICIANS THROUGH THE 8 MATHEMATICAL PRACTICE STANDARDS

The focus of math education has evolved to develop students as mathematicians and problem solvers. This training connects the 8 Mathematical Practice Standards with Forbes' most employable skills of 2024, which helps educators identify the important traits students develop in math class. This training is a valuable resource for support staff and educators who assist math learners.

## AI FOR EDUCATORS WORKSHOP

Explore how artificial intelligence can transform teaching and learning. In this hands-on introduction, educators will discover what generative AI is, how it works, and how it can simplify everyday tasks. Participants will see practical demonstrations, explore classroom-ready tools, and discuss the ethical use of AI in education. By the end, schools and districts will have a shared understanding and common language to guide responsible AI use moving forward.

## AI FOR FUTURE-READY CLASSROOMS WORKSHOP

Take your AI understanding to the next level with this advanced, application-focused session. Participants will learn how to build AI literacy in students, develop durable future-ready skills, and design assessments that reflect authentic learning. The workshop explores ways to use AI for creative, student-centered instruction and helps educators prepare learners to navigate confidently — and shape — a world influenced by AI.

## AI STRATEGY & IMPLEMENTATION

Work alongside our team to create a clear, practical roadmap for AI integration in your district. Through collaboration with leadership teams, we'll help align AI use with instructional goals and ensure responsible, ethical adoption. The process includes developing customized policies, building capacity among staff, and outlining sustainable next steps to support teachers and students as they embrace AI-driven innovation.

# SPECIAL EDUCATION

Enable educators to cultivate an inclusive classroom by offering targeted training on effectively supporting diverse learning needs.

## IEP BEST PRACTICES

Move beyond mere compliance with our IEP Best Practices training. Gain valuable tips, tricks, and strategies to craft effective and comprehensive Individualized Education Programs (IEPs) that meet your students' needs while ensuring adherence to best practices.

## INTRODUCTION TO FUNCTIONAL BEHAVIOR ASSESSMENTS

Unlock the potential of Functional Behavior Assessments (FBAs) with our comprehensive training. Learn to identify the purposes and functions behind student behaviors and master the FBA process to implement effective, data-driven behavior interventions.

## WRITING BEHAVIOR INTERVENTION PLANS (BIPS)

Ensure consistency and effectiveness in addressing student behaviors with our Writing Behavior Intervention Plans (BIPs) training. Learn to develop clear, comprehensive BIPs that provide all staff members with the same protocol, promoting a unified approach to behavior management.

## SENSORY PROCESSING

Gain insights into sensory processing disorders and their impact on student learning and behavior. This training offers practical strategies to create inclusive classroom environments that support sensory needs, enhancing the ability to promote a positive learning experience for all students.

## EXECUTIVE FUNCTIONING

Discover the critical role of executive functioning skills in classroom success. This training provides educators with practical insights into enhancing students' executive function abilities. Learn effective strategies to support organization, planning, time management, and self-regulation skills, empowering students to achieve academic and personal growth.

## FUNCTIONAL SKILLS

Enhance students' ability to live independently through targeted training on essential functional skills, covering daily living, communication, and social skills. Educators will gain practical strategies to effectively teach and reinforce these skills, empowering students for greater independence and success in everyday life.

## ADMINISTRATOR'S ROLE IN SPECIAL EDUCATION

Admins play a key role in fostering successful special education programs. This training equips them with knowledge and strategies to support diverse student needs, collaborate with stakeholders, and ensure compliance with regulations. Gain insights for creating inclusive learning environments for all students.

**I LOVE THAT WE TOOK A DEEP DIVE ON OUR STUDENTS WITH DISABILITIES. IT HAS HELPED ME TO UNDERSTAND THIS INCREDIBLY IMPORTANT POPULATION OF STUDENTS.**

# PARAPROFESSIONAL TOOLKIT

## MODULE-BASED LEARNING

Strengthen the classroom experience by providing paraprofessionals with the tools they need to make a meaningful impact. This toolkit equips paraprofessionals with knowledge, skills, and a practical framework for differentiation, ensuring that all students receive the support they need.

»»» These tools can be combined and customized to create an in-person, online, or hybrid training opportunity. Ask us about additional online tools that support English Language learners.



# LITERACY

Equip educators with practical, research-based literacy strategies that strengthen instruction and support all learners. Build collaborative learning communities to share best practices, refine teaching approaches, and drive meaningful gains in student reading and writing outcomes.

## FOUNDATIONAL READING

Our Foundational Reading training covers the what, when, why, and how of the Big 5 components of reading: Phonemic Awareness, Phonics, Fluency, Vocabulary, and Comprehension. This training integrates brain science with practical classroom applications, equipping educators with the knowledge and tools to enhance students' reading skills and foster a love for reading.

## UNRAVELING THE READING ROPE

During this intensive and transformative journey into the Science of Reading, you will explore the theoretical framework known as the Reading Rope. You will also reflect on your current practices and leave with a stronger foundation and greater confidence to engage learners in reading based on scientific principles.

## UNRAVELING THE WRITING ROPE

This training supports explicit writing instruction based on the science of writing. It offers an overview of the five key components of writing and specific techniques for implementing them in the classroom at any level from K to 12.

## APPLY THE SCIENCE OF READING TO GRADES 6-12

This session provides middle and high school educators with an overview of the Science of Reading and how literacy skills continue to develop in adolescent learners. Using Scarborough's Reading Rope as a framework, participants will explore practical strategies to strengthen fluency, vocabulary, comprehension, and content-area reading across secondary classrooms.

**EMPOWERING EDUCATORS WITH THE TOOLS TO ENHANCE STUDENT OUTCOMES.**

## 3L: LANGUAGE & LITERACY FOR LEARNING

An 8-module, 20-hour professional development program to support teachers and schools to develop a shared, consistent, and explicit approach to language and literacy – one that strengthens teaching practice and improves learning outcomes for all students across all disciplines. Includes group workshops, practical readings and classroom-based activities supported by Lexia Education.

## FAMILY ENGAGEMENT SCIENCE OF READING RESOURCES

Our Science of Reading family engagement offerings help schools build lasting partnerships with families to strengthen literacy across South Dakota. Through hands-on events, take-home kits, and other resources, we make reading accessible, meaningful, and fun for every child and family. Designed for schools implementing or expanding Science of Reading practices, these supports can be customized for preschool through high school.



# ADDITIONAL LITERACY OFFERINGS

Building a strong literacy framework involves multiple interconnected components. These offerings provide flexible support to enhance instructional coherence, deepen educator understanding, and strengthen district-wide literacy practices grounded in a shared literacy framework. All offerings eligible for ELA-SD grant.

**DEVELOPING A LITERACY LEADERSHIP TEAM**

**ASSESSMENT AND DATA-DRIVEN DECISION MAKING**

**PROFESSIONAL LEARNING SCIENCE OF READING (SOR)**

**CLASSROOM INSTRUCTION (STRUCTURED LITERACY AND EXPLICIT INSTRUCTION)**

**TIERED INSTRUCTION**

**WRITING INSTRUCTION**

**FAMILY ENGAGEMENT**

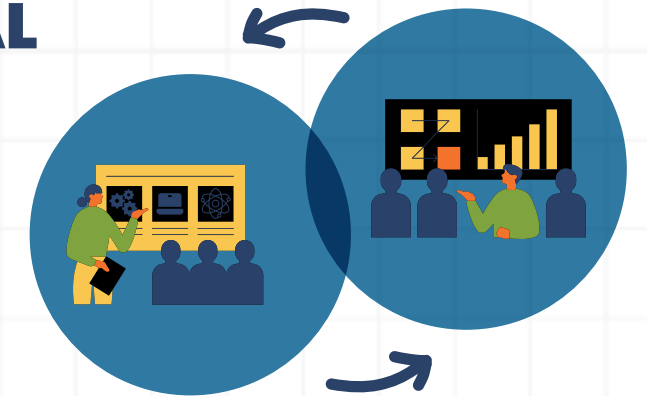
## ADD-ONS

Enhance the impact of your professional development with these optional add-ons, designed to maximize learning outcomes and support continuous improvement in your school.

## EMBEDDED PROFESSIONAL DEVELOPMENT

Our expert STEAM instructors lead your students in cutting-edge science and technology activities during the school day while your teachers engage in uninterrupted professional learning, facilitated by our learning specialists.

Fully customizable, our Embedded PD adapts to your school's specific needs, ensuring a seamless experience.



## COACHING

Enhance teacher effectiveness, boost student achievement, and strengthen school culture by integrating coaching into any professional development topic offered by Compass.

Our trained coaches provide personalized support, accountability, and targeted training, using a proven framework to drive continuous improvement in teaching practices and elevate overall school performance.

Interested in learning more about how coaching can support your school's goals? Contact us today to schedule a consultation with one of our experienced instructional coaches.



# DATA EVALUATION & PLANNING



## SCAN THE QR CODE

to learn more about the fully-customizable options available to your team!

Compass specializes in providing customized data collection tools and analysis processes tailored to meet the unique needs of each district or classroom. Our user-friendly tools gather and organize meaningful data, offering a comprehensive view of your organization.

We ensure that the data is current and valid through clear implementation processes, enabling stakeholders to easily interpret and utilize insights for informed decision-making.

Our data analysis identifies root causes, pinpoints challenges, and guides the development of actionable improvement plans, with ongoing support provided throughout the process.

All of Compass's data analysis process can be customized to meet the needs of your team. We can analyze data at grade level, building-wide level, and district-wide level. A minimum of a half-day is required to analyze data and complete the root cause analysis process.



## IMPROVE YOUR SCHOOL'S RESULTS WITH PROVEN DECISION-MAKING PROCESSES

## DATASMART PROCESSES

Our DataSmart processes involve forming dedicated committees, conducting in-depth quantitative and qualitative data collection, and facilitating data retreats. These retreats span one to two days, during which data is presented and analyzed in a user-friendly way to inform goal setting and action planning. Monthly check-ins and validation retreats ensure continuous progress monitoring and adjustment based on evolving data insights.

### COMPREHENSIVE ASSESSMENT OF DISTRICT SPECIAL EDUCATION PROGRAMS (CADS)

Our Comprehensive Assessment of District Special E CADS comprehensively evaluates district special education systems, including student performance, culture, leadership, teacher efficacy, and instructional practices. This process yields comprehensive reports that drive data-informed decision-making and strategic goal-setting. Compass supports over forty districts annually through facilitated analysis sessions and ongoing coaching to ensure the effective implementation of improvement plans.

### COMPREHENSIVE NEEDS ASSESSMENT (CNA)

Our Comprehensive Needs Assessment (CNA) helps schools and organizations identify critical gaps and opportunities within their systems by leveraging both qualitative and quantitative data. Through customized data collection tools, such as surveys, interviews, focus groups, observations, and performance data analysis, we capture a comprehensive and accurate picture of stakeholder experiences and system performance. This tailored approach allows us to uncover root causes, align resources and interventions, and ensure that each district's true needs, priorities, and context are reflected in actionable, data-driven solutions that improve educational outcomes.

## OTHER DATA SERVICES

Compass supports local, state, and federal data organizations, providing tailored data collection tools and facilitating impactful data retreats. We guide decision-making processes through comprehensive needs assessments, ensuring educational strategies align with data-driven insights.

### DATA RETREAT FACILITATION

We specialize in facilitating 1-2 day data retreats with schools and organizations to deeply analyze local, state, and federal data and translate findings into clear, actionable steps. Using multiple data sources, such as NWEA, Acadience, statewide assessments, and other district-specific measures, we guide teams through a structured process to identify trends, uncover root causes, and prioritize high-impact strategies. Our approach integrates both qualitative and quantitative data and includes customized tools and protocols to ensure the analysis reflects each district's unique context, challenges, and goals. By the end of the retreat, teams leave with aligned priorities, defined action steps, and a practical plan to improve educational outcomes.

### DATA CYCLES

Our Data Cycle sessions empower educators with the tools to implement data-driven instruction effectively. By identifying learning gaps and enabling timely interventions, we support personalized learning approaches that enhance student achievement and instructional effectiveness.

### SOAR STRATEGIC PLANNING

Grounded in a strengths-based approach, SOAR (Strengths, Opportunities, Aspirations, Results) brings teams together to reflect, dream, and design a shared path forward. Through guided conversations and interactive facilitation, we help groups uncover what they do best, identify emerging opportunities, envision their ideal future, and define clear, meaningful measures of success.

### OST EVALUATION

Amplify the impact of your afterschool program with our data-driven evaluation. You'll gain valuable insights, and together, we will identify challenges and set goals to achieve measurable and sustainable results.

### STRATEGIC PLANNING

Compass specializes in strategic planning that aligns with organizational goals and strengthens overall effectiveness. We design and facilitate comprehensive planning processes, from data collection and stakeholder engagement to implementation and progress monitoring, helping school systems develop actionable plans that drive continuous improvement and long-term success.



# CULTURE & CONNECTION



**SCAN THE QR CODE**

to learn more about the fully-customizable options available to your team!

Unlock the potential of your school by cultivating a positive and healthy culture and climate. Our professional development workshops, led by knowledgeable learning specialists, seamlessly integrate research and practice to elevate your school's culture and connection, leading to improved student success.

Embark on a transformative journey to enhance your school's culture and connection with the support of our adept learning specialists. Our workshops are fully customizable to meet your needs and drive impactful change.



**TRANSFORM YOUR ORGANIZATION OR COMMUNITY THROUGH RELATIONAL TRUST**

## INTERCULTURAL DEVELOPMENT INVENTORY COACHING

Designed for educators, leaders, and organizations, IDI Coaching uses the Intercultural Development Inventory as both a mirror and a map for growth. Through guided reflection and storytelling, participants deepen awareness of how they engage across cultural differences and build practical, relational strategies for more inclusive and effective practice.

## STORYWORK SEL IMPLEMENTATION

Storywork SEL brings social-emotional learning to life through personal narrative, inviting educators and students to explore identity, emotion, and connection through real stories. This approach builds empathy, belonging, and emotional intelligence while empowering teachers to design meaningful, story-centered learning experiences rooted in their own classroom communities.

## CULTURALLY RESPONSIVE & HUMAN-SHAPED LEARNING PATHWAYS

These customizable professional learning pathways support schools and districts in centering relationship, trust, and cultural responsiveness in teaching and leadership. Through sustained cohort experiences, participants engage in reflection, dialogue, and practical application to create learning environments where all students feel seen, valued, and capable of growth.

## RELATIONAL SYSTEMS DESIGN & CULTURE AUDITS

Grounded in Relational Landscaping, this work helps organizations examine how structures, policies, and daily practices shape the human experience of their workplace. Through audits and collaborative redesign, teams uncover hidden dynamics, strengthen trust, and align systems with values that support belonging, resilience, and long-term organizational health.

## LEADERSHIP RETREATS, COHORT EXPERIENCES

These retreats and workshops create intentional spaces for educators and leaders to slow down, reflect, and reconnect with purpose through the Circle of Trust approach and Touchstones. Participants engage in storytelling, dialogue, and "third things" like poetry to build relational trust, deepen self-awareness, and strengthen their capacity to lead with presence and authenticity.

## INDIGENOUS EDUCATION & CULTURALLY RESPONSIVE PRACTICE

This work supports schools in honoring Indigenous perspectives and embedding culturally responsive practices through storytelling, relationship-building, and community partnership. Educators are guided to approach this work not as experts, but as learners—connecting their content areas with diverse cultural perspectives in ways that foster respect, accuracy, and meaningful inclusion.

## NARRATIVE & LEGACY STORYTELLING PROJECTS

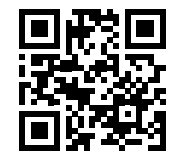
These projects capture and elevate the voices of students, educators, elders, and community members through video and narrative storytelling. More than documentation, they create lasting invitations for reflection, empathy, and learning—preserving stories as living bridges that connect generations and deepen understanding across differences. For anyone in schools, districts, organizations, and communities.

**THE STORYTELLING AND THE CONNECTIONS PEOPLE MAKE THROUGH THIS PROCESS ARE REALLY POWERFUL.**





# COMMUNITY & FAMILY ENGAGEMENT



## SCAN THE QR CODE

to learn more about the fully-customizable options available to your team!

Compass' Community and Family Engagement services are designed to strengthen connections between schools, families, and communities—creating a foundation where students can thrive. We partner with districts and organizations to build strong, collaborative relationships that ensure every student is supported by a united community.

Our approach focuses on elevating family voice and fostering open, trusting communication between educators and families. Through customized tools, workshops, and engagement strategies, we help bring diverse perspectives together, creating a positive culture where collaboration leads to stronger outcomes for students.



## STRENGTHEN THE CONNECTION BETWEEN YOUR SCHOOL AND FAMILIES

### FAMILY VOICE

We help school administrators build trust and open communication with families and the community. Together, we can create a positive school culture where collaboration leads to better student outcomes.

### FAMILY ENGAGEMENT LEADERSHIP TEAMS

These teams unite educators, families, and community leaders to create lasting partnerships that uplift student success. Through shared strategies and meaningful connections, we strengthen school-family relationships.

### MANAGING EMOTIONS: USING CALM KITS

This course introduces brain-based self-regulation strategies, using sensory tools and calm spaces to support students. By partnering with families, we promote emotional well-being in and beyond the classroom.

### FAMILY FUN NIGHTS

Family Fun Nights bring schools, families, and communities together for shared learning experiences, strengthening relationships and promoting student engagement.

### ESCAPE ROOM EXPERIENCES

This immersive experience brings real-world stories to life, challenging participants to think critically and take action. Exploring community issues in an engaging way helps build empathy and provides insights for schools, workplaces, and communities.

### FAMILY ENGAGEMENT & SCIENCE OF READING RESOURCES

Our Science of Reading family engagement offerings help schools build lasting partnerships with families to strengthen literacy across South Dakota. Through hands-on events, take-home kits and other resources, we make reading accessible, meaningful, and fun for every child and family. Designed for schools implementing or expanding Science of Reading practices, these supports can be customized for preschool through high school.



## FREE FAMILY ENGAGEMENT RESOURCES



The South Dakota Statewide Family Engagement Center (SD SFEC) connects students' families, educators, and communities—empowering learners with the support they need to succeed. Explore the site to access free trainings and tools to help educators, families, and communities work together to support student success inside and outside the classroom.



# CLASSROOM & TEAM SUPPORT

Empower educators with strategies for effective curriculum alignment, essential standards identification, and evolving grading practices. Foster collaborative professional learning communities to share best practices and continuously improve teaching skills for enhanced student outcomes.

Our wide range of specialized services aim to enhance the learning experiences of students and educators. By utilizing these resources, educators can establish dynamic, supportive, and effective learning environments.



**SCAN THE QR CODE** to learn more about the fully-customizable options available to your team!



**FOSTER COLLABORATION AMONG EDUCATORS TO BETTER UNDERSTAND STUDENT NEEDS**

## TIERED SUPPORT: FROM DATA TO IMPACT

This professional learning experience guides educators through the process of analyzing student data, identifying instructional needs, selecting targeted interventions, and monitoring growth over time. Participants will gain practical tools and systems to support responsive instruction and ensure students receive the right level of support at the right time.

## PLC FACILITATION

Professional Learning Communities (PLCs) allow educators to collaborate, reflect, and refine their teaching practices. Participation in PLCs can help educators leverage their collective expertise, share best practices, and continue developing professionally to enhance student learning outcomes.

## CO-TEACHING TRAINING

Collaborative teaching in co-taught classrooms involves multiple educators working together to deliver tailored guidance and assistance to students with diverse needs. These trainings will teach you how to leverage various teaching styles and perspectives. This approach ensures that every student's needs are addressed, fostering an immersive and stimulating learning atmosphere.

## CO-TEACHING COACHING

Our coaches will provide ongoing support throughout co-teaching training. We accomplish this for our partners by developing solid relationships and structuring protocols for proper planning and instruction delivery.

## SUPPORTIVE CLASSROOM

In this workshop, learn how to create and implement strategies for a collaborative classroom with at least one certified staff member and one or more non-certified support staff. This could involve pairs of certified teachers teaching together without co-planning time, paraprofessionals, parent volunteers, high school mentors, or any classroom personnel who have a good understanding of student needs. Participants will learn about co-teaching models and data collection tools.

## ESSENTIAL STANDARDS/VISIBLE LEARNING

Clarity between teachers and their students is crucial for classroom success. Teachers must understand what their students are learning and help them comprehend the curriculum. Our team offers processes and protocols to assist teachers in identifying and aligning essential standards with their lesson plans, addressing the diverse needs of their students.

## EVOLVING GRADING PRACTICES

By shifting the focus of homework and practice to feedback instead of grades, we empower students to take ownership of their progress. This approach allows teachers to have a direct impact on classroom dynamics and ensures that high expectations for learning are maintained. Our team assists in establishing effective processes and protocols for teachers to implement these evolving grading practices.

## STUDENT-CENTERED LEARNING

Student-Centered Learning emphasizes mastering skills and knowledge while engaging students in authentic, hands-on experiences that promote creativity, curiosity, and motivation. By personalizing instruction, providing support, and cultivating a deeper understanding of the curriculum, educators can create dynamic learning environments that prepare students for success in an ever-evolving world. We provide guidance and tools to assist educators in effectively implementing these approaches for deep learning and real-world connections.



## TRAINING FOR CLASSROOM & TEAM SUPPORT

Discover a wide range of training courses aimed at supporting classrooms, managing emotions, increasing family engagement, literacy support and more!

## BEHAVIOR SOLUTIONS

Our behavior trainings emphasize developing behavioral principles, strategies, and frameworks to foster a positive learning environment through practical scenarios and engaging discussions, meeting the diverse behavioral needs of students.

### BEHAVIOR COACHING

Enhance your expertise in managing student behaviors with our Behavior Coaching program. Receive personalized coaching, observations, and small group or 1-on-1 training—on-site, virtually, or through a blended approach—from our Compass behavior specialists. Learn to understand behavior antecedents and consequences and implement effective interventions tailored to your school's or district's unique needs.

### BEHAVIOR SUPPORT & IMPLEMENTATION PLC

Transform your school's behavior management with Compass's support for establishing Professional Learning Communities (PLCs). Our monthly training sessions, led by experts, focus on improving academic and social behavior outcomes for all students. Educators will develop essential skills to address classroom behaviors effectively and create a supportive learning environment for every student.

### MONITORING AND MANAGING BEHAVIORS TRAINING

Go in-depth about why behaviors develop and occur. Staff will learn various approaches to manage behaviors effectively. Let the Compass team support behavior management in your school.

### OUT-OF-SCHOOL TIME SUPPORT SERVICES - BEHAVIOR

Our behavior training for afterschool programs emphasizes creating behavioral principles, strategies, and frameworks to foster a positive learning environment through practical scenarios and engaging discussions to meet the diverse behavioral needs of students.



## MANAGING EMOTIONS: USING CALM KITS

Learn more about the neuroscience of managing emotions and using learned strategies effectively at your organization or school. The self-paced online training offers 4 CECH + one free SFEC Calm Kit!

**LOTS OF USEFUL INFORMATION, STRATEGIES, AND TOOLS TO IMPLEMENT REGARDING EMOTIONAL REGULATION FOR STUDENTS.**

## PROJECTS

You can find additional services supporting programs serving infants to adults by exploring our projects.



### BLACK HILLS ONLINE LEARNING COMMUNITY

The Black Hills Online Learning Community (BHOLC) provides innovative, self-paced online education options for South Dakota students while maintaining enrollment in their home districts, following all local policies and graduation requirements. BHOLC was established to enhance educational opportunities in South Dakota, leveraging technology to create flexible learning pathways for students in collaboration with local school districts.



### 21st Century Programs

#### 21ST CENTURY

Our 21st Century programs, funded through the Nita M. Lowey 21st Century Community Learning Centers grant, provide out-of-school time opportunities that support student learning beyond the school day. These programs offer academic support, enrichment, and safe, supportive environments that help students build skills and stay connected.



### SOUTH DAKOTA STATEWIDE FAMILY ENGAGEMENT CENTER

The South Dakota Statewide Family Engagement Center (SD SFEC) connects families, educators, and communities to support student success. Funded by a federal grant, originally awarded by the U.S. Department of Education, our work is guided by a cradle-to-career vision that recognizes families as essential partners in lifelong learning. Through trainings, resources, events, and convenings, we build relationships and strengthen systems that foster meaningful, sustainable family engagement. Research and experience affirm a simple truth: when families, schools, and communities are connected, children thrive.



### THIRDSPACE FOR OST

ThirdSpace Collaborative is an out-of-school time (OST) initiative focused on expanding high-quality programming through partnerships, professional development, and hands-on learning experiences. With a strong emphasis on STEAM, it provides services and learning opportunities for students, educators, and programs both during and beyond the school day. Through training, tools, and collaborative support, it helps create engaging, sustainable experiences that build skills, increase participation, and strengthen student and family engagement.



### BLACK HILLS BIRTH TO THREE

The South Dakota Birth to Three Early Intervention Program is a voluntary, family-focused service for children from birth to 36 months with developmental delays. We provide support and training to help families understand and address their child's needs. Services include coordination, special instruction, occupational therapy, physical therapy, and speech-language pathology.



**A Division of BHSSC**

**[compass.bhssc.org](http://compass.bhssc.org) • 605-394-1876**

1925 N Plaza Blvd, Rapid City, SD 57702